



T032

Sonic Toothbrush
Daily Whitening — Powered by Sonic

Core Technology, Professional Cleaning

Powered by a 31,000–41,000 VPM micro-motor, our sonic system combines direct friction with deep-fluid dynamics to remove plaque from surfaces, between teeth, and below the gumline. It is paired with 6 μ m FDA-compliant DuPont® bristles to deliver a professional clean that actively cares for your gum health.

Improve Oral Health, Start with Tooth Care

Multiple brushing modes support your oral wellness, tailored to your needs, effectively removing plaque and significantly reducing subgingival bacteria.

2-Year Official Warranty

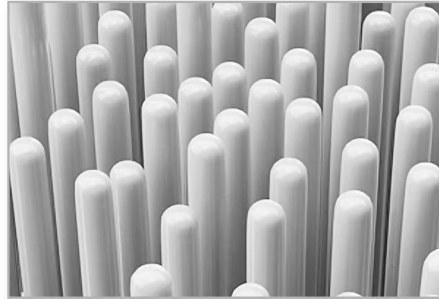
JIEBOYA®
Personal Care Expert

Professional Gum-Care Sonic Toothbrush

JIEBOYA®
Personal Care Expert

Powerful cleaning. Gentle protection.

It cleans every tooth thoroughly, giving you a mouth that feels healthy, fresh, and perfectly comfortable—and a completely new oral care experience.

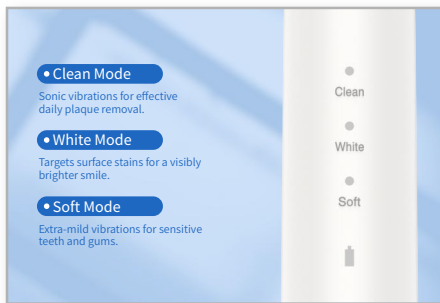


1. HF Vibration for Deep Cleaning

• Cleans with both mechanical friction and fluid pressure to remove plaque and help prevent gum issues.

2. Soft DuPont Bristles

• Made with 6µm DuPont soft bristles, meeting FDA food-contact standards.



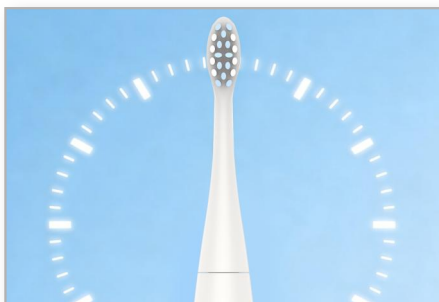
3. Multiple Cleaning Modes

• 3 smart modes provide complete cleaning for different oral care needs.



4. IPX7 Waterproof Rating

• Waterproof construction allows the entire unit to be rinsed under water without worry.



5. Smart Brushing Timer

• 2-minute timer automatically shuts off upon reaching recommended duration, 30-second timer for quadrant reminder.



6. USB-C Charging & Long-Lasting Battery

• A single USB-C cable charges everything. Enjoy worry-free use for up to 25 days on a full charge.

Specifications

Product Parameter:

- Model : T032
- Dimensions : 28×28×243mm (including brush head)
- Mode : 3 modes
- Frequency : 30000-35000 VPM
- Battery : 800mAh Lithium-ion
- Charging Time : <4 hours
- Usage time on a full charge : around 30 days
- Power Supply : USB-C
- Waterproof Rating : IPX7
- Input : 5V/1A
- Material : ABS, DuPont Bristles

Packaging Details:

- Contents :
 - Main Unit x 1
 - USB x 1
 - Brush Heads x 2
 - Manual x 1
- Color Box size : 88×33×206mm
- Pieces per Carton : 50 PCS
- Net/Gross Weight : 9.1kg/9.9kg
- Carton Dimensions : 458×345×238mm

Certifications

Product Certifications:




Qualification Certification:



*User-Centered Design
Meeting Diverse Needs*

 **Contact Person: Calvin Wang**  **Email: calvin_wang@jieboya.com**

 **Phone: +86 18750262332**  **Website: JIEBOYA.com**